

Canon S90
400ASA, F3.5
2Inch
Macro 6mm

EM34
(1/80s)

EM35
(1/80s)

CV51
(1/20s)

1629 VT138
(1/20s)

UM4
(1/40s)

6E5 CRC
(1/40s)

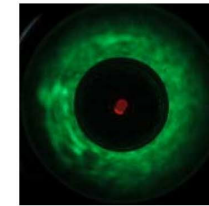
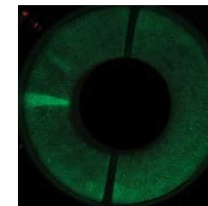
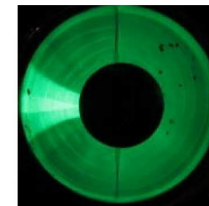
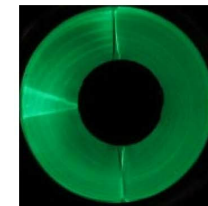
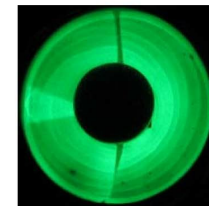
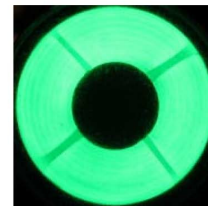
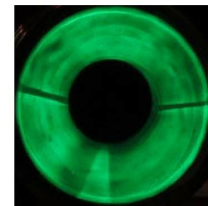
6E5 RCA
(1/20s)

6U5
(1/20s)

6G5
(1/20s)

6T5
(1/20s)

Va=250V
Vh=nom



01_EM34_s80_6V3_250_IA=2280uA

02_EM35_s80_6V3_250_IA=1180uA

03_CV51_s20_6V3_250_IA=1830uA

04_1629-VT138_s20_6V3_250_IA=190uA

05_UM4_s40_12V6_250_IA=1300uA

06_6E5-CRC_s40_6V3_250_IA=520uA

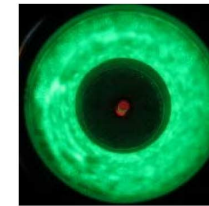
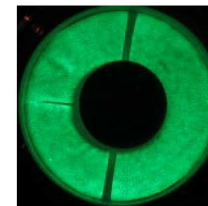
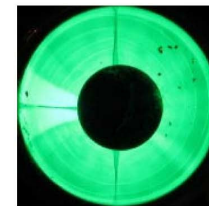
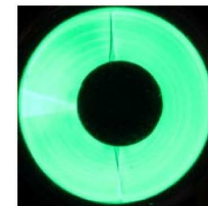
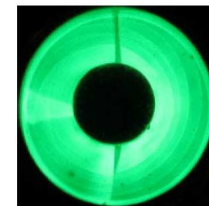
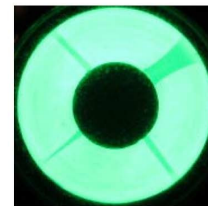
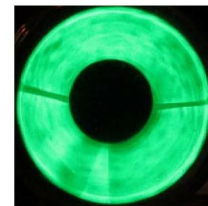
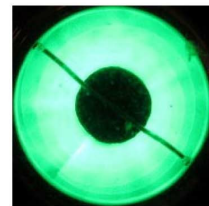
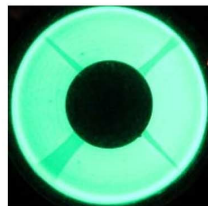
07_6E5-RCA_s20_6V3_250_IA=2490uA

08_6U5_s20_6V3_250_IA=910uA

09_6G5_s20_6V3_250_IA=460uA

00_6T5_6V3_250_IA=370uA

Va=500V
Vh=nom



11_EM34_s80_6V3_500_IA=5680uA

12_EM35_s80_6V3_500_IA=2900uA

13_CV51_s20_6V3_500_IA=2500uA

14_1629-VT138_s20_6V3_500_IA=260uA

15_UM4_s40_12V6_500_IA=1560uA

16_6E5-CRC_s40_6V3_500_IA=720uA

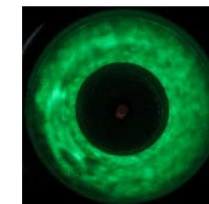
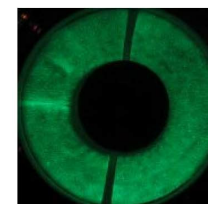
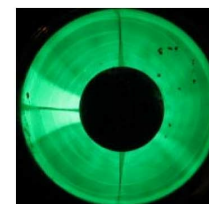
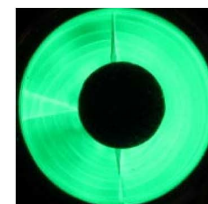
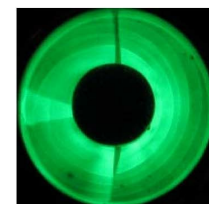
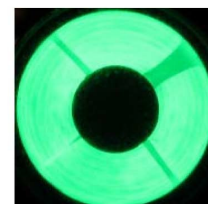
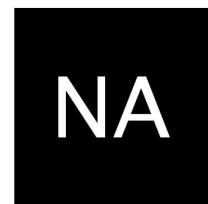
17_6E5-RCA_s20_6V3_500_IA=6600uA

18_6U5_s20_6V3_500_IA=1200uA

19_6G5_s20_6V3_500_IA=1200uA

10_6T5_6V3_500_IA=1290uA

Va=500V
Vh=5.3/10.6V



21_EM34_s80_3V3_500_IA=1000uA

22_EM35_s80_4V3_500_IA=690uA

23_CV51_s20_5V3_500_IA=910uA

24_1629-VT138_s20_5V3_500_IA=uA

25_UM4_s40_10V6_500_IA=620uA

26_6E5-CRC_s40_5V3_500_IA=340uA

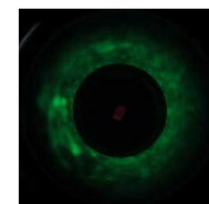
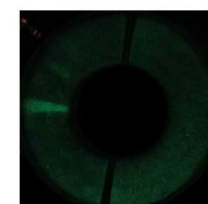
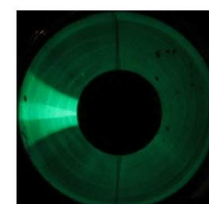
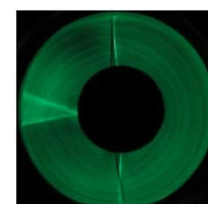
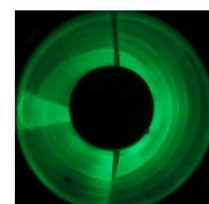
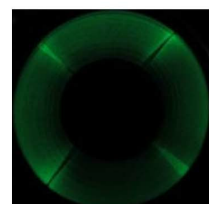
27_6E5-RCA_s20_5V3_500_IA=3650uA

28_6U5_s20_5V3_500_IA=780uA

29_6G5_s20_6V3_500_IA=780uA

20_6T5_5V3_500_IA=840uA

Va=250V
Vh=5.3/10.6V



31_EM34_s80_3V3_250_IA=550uA

32_EM35_s80_3V3_250_IA=140uA

33_CV51_s20_5V3_250_IA=720uA

34_1629-VT138_s20_5V3_250_IA=uA

35_UM4_s40_10V6_250_IA=470uA

36_6E5-CRC_s40_5V3_250_IA=180uA

37_6E5-RCA_s20_5V3_250_IA=1770uA

38_6U5_s20_5V3_250_IA=280uA

39_6G5_s20_6V3_250_IA=280uA

30_6T5_5V3_500_IA=187uA